

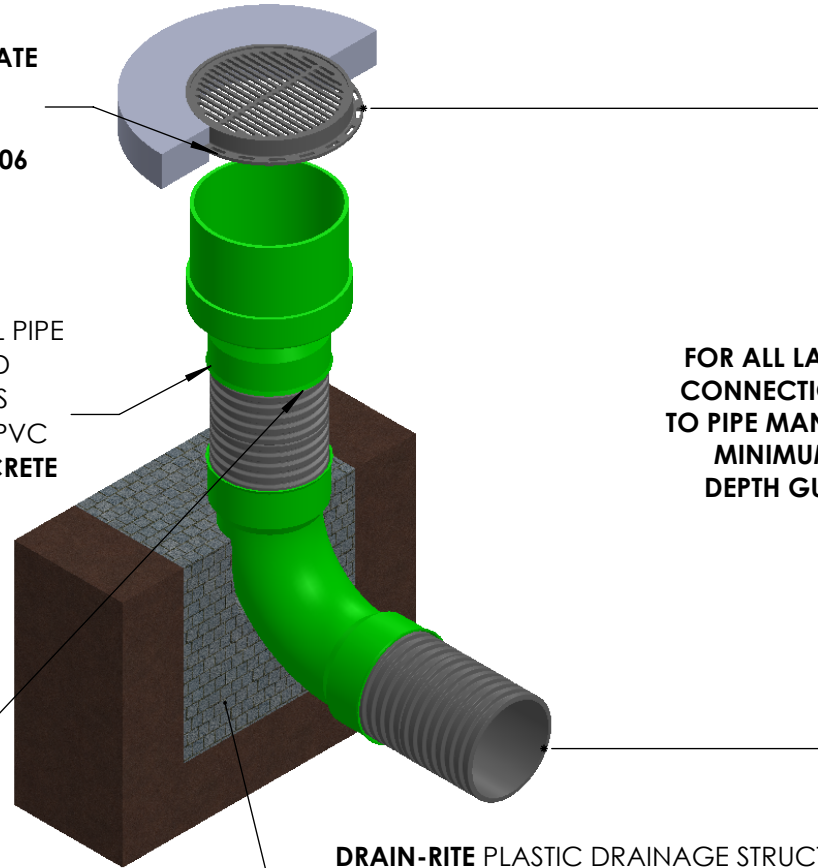
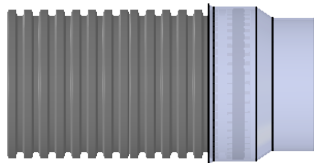
DRAIN-RITE INLINE DRAIN STANDARD DETAIL

DUCTILE IRON ROUND GRATE
COUPLED WITH **FRAME**
CONSTRUCTED MEETING
ASTM A536 GRADE 80-55-06

DRAIN-RITE INLINE DRAINS PROVIDE LATERAL PIPE CONNECTIONS FOR **4" TO 30"** CORRUGATED **DUAL WALL POLYETHYLENE** PIPES, AS WELL AS **SMOOTH-WALL, RIBBED, AND CORRUGATED** PVC PIPES. CONNECTIONS TO **METAL** AND **CONCRETE** PIPES ARE ALSO SUPPORTED.

FOR ALL LATERAL PIPE CONNECTIONS, REFER TO PIPE MANUFACTURER MINIMUM BURIAL DEPTH GUIDELINES.

TYPICAL GASKETED CORRUGATED PLASTIC PIPE CONNECTION



DRAIN-RITE PLASTIC DRAINAGE STRUCTURES AND **INLINE DRAINS** ARE DESIGNED TO BE INSTALLED FOLLOWING THE RECOMMENDED BACKFILL MATERIALS AND METHODS OUTLINED IN **ASTM D2321**. THESE INCLUDE **CLASS 2** RATED **BEDDING** AND **BACKFILL MATERIALS** SUCH AS ANGULAR STONE AND OTHER CRUSHED OR GRANULAR SUBSTANCES, AS SPECIFIED IN **ASTM D2321**. THE BEDDING AND BACKFILL MUST ALSO BE PLACED AND COMPACTED IN LAYERS IN ACCORDANCE WITH **ASTM D2321** REQUIREMENTS.



Galaxy Plastics Ltd.

WEST
9-30321 FRASER HWY
ABBOTSFORD, BC
V4X 1T3
1-877-808-1088

EAST
231 KING STREET
BARRIE, ON
L4N 6B5
1-888-431-0511

U.S.A.
21450 NW WEST UNION Rd,
HILLSBORO, OR
97124
1-877-814-2803


DIMENSIONS ARE IN
INCHES UNLESS
OTHERWISE SPECIFIED
TOLERANCES:
LINEAR: $\pm 1/2"$
ANGULAR: $\pm 2^\circ$

REV	DESCRIPTION	DATE	DRAWN	GOWTHAM	27-MAR-2025
0	INITIAL DRAWING	27-MAR-2025	CHECKED	ROB JULIEN	27-MAR-2025
			APPROVED		
			Q.A.		
			COMMENTS:		

5	DESCRIPTION		
5	DRAIN-RITE INLINE DRAIN STANDARD DETAIL		
	PART NUMBER		REV
	N/A		0
	MATERIAL :		
	SCALE:1:22.5	WEIGHT:	SHEET 1 OF 2

NOTE:

1. **DRAIN-RITE** PLASTIC DRAINAGE STRUCTURES, INCLUDING **DRAIN BASINS** AND **INLINE DRAINS**, ARE MADE FROM PVC PIPE STOCK . A **THERMO-MOLDING** PROCESS IS USED TO ENSURE A CONSISTENT WATERTIGHT SEAL THROUGHOUT THE DRAINAGE STRUCTURE AND ITS OUTLET STUBS. THE PVC RESIN USED IN THE PRODUCTION MEETS THE **ASTM D1784** CELL CLASS **12454** STANDARD.
2. THE **OUTLET STUBS** FOR **DRAIN-RITE** PLASTIC DRAINAGE STRUCTURES ARE ALSO MANUFACTURED FROM PVC PIPE STOCK UTILIZING **THERMO-MOLDING** PROCESS TO ENSURE A TIGHT PIPE-TO-STRUCTURE FIT, SO THAT THE APPROPRIATE PIPE GASKETS, THE PIPE-TO-STRUCTURE CONNECTION MEETS OR EXCEEDS THE PRESSURE REQUIREMENTS OF THE **ASTM D3212** STANDARD FOR PIPE CONNECTIONS OF PLASTIC DRAINAGE PIPE AND SEWER PIPE USING FLEXIBLE ELASTOMERIC SEALS. THESE PIPE GASKETS MUST MEET **ASTM F477** REQUIREMENTS.
3. **12" THROUGH 36" ROUND** AND **SQUARE** HINGED STANDARD GRATES AND **SOLID COVERS** MEET **H25 LOAD RATING**. **12" THROUGH 24" ROUND** AND **SQUARE** HINGED STANDARD GRATES MEET **H10 LOAD RATING**. TRAFFIC FAMILY AND CURB INLET **2' X 2'** AND **2' X 3' GRATES** MEET **H25 LOAD RATING**. **8" AND 10" GRATES** AND **SOLID COVERS** ARE ONE - PIECE DROP-IN CASTINGS DESIGNED FOR **LIGHT DUTY** LOAD APPLICATIONS. ALL **DOMED GRATES** ARE **NOT LOAD RATED**.

 Gaaxy Plastics Ltd.	WEST 9-30321 FRASER HWY ABBOTSFORD, BC V4X 1T3 1-877-808-1088 EAST 231 KING STREET BARRIE, ON L4N 6B5 1-888-431-0511 U.S.A. 21450 NW WEST UNION Rd, HILLSBORO, OR 97124 1-877-814-2803	DIMENSIONS ARE IN INCHES UNLESS OTHERWISE SPECIFIED TOLERANCES: LINEAR: $\pm 1/2"$ ANGULAR : $\pm 2^\circ$	REV	DESCRIPTION	DATE	DRAWN	GOWTHAM	27-MAR-2025	DESCRIPTION DRAIN-RITE INLINE DRAIN STANDARD DETAIL PART NUMBER N/A MATERIAL : SCALE:1:22.5 WEIGHT: SHEET 2 OF 2
			0	INITIAL DRAWING	27-MAR-2025	CHECKED	ROB JULIEN	27-MAR-2025	
						APPROVED			
						Q.A.			
						COMMENTS:			