

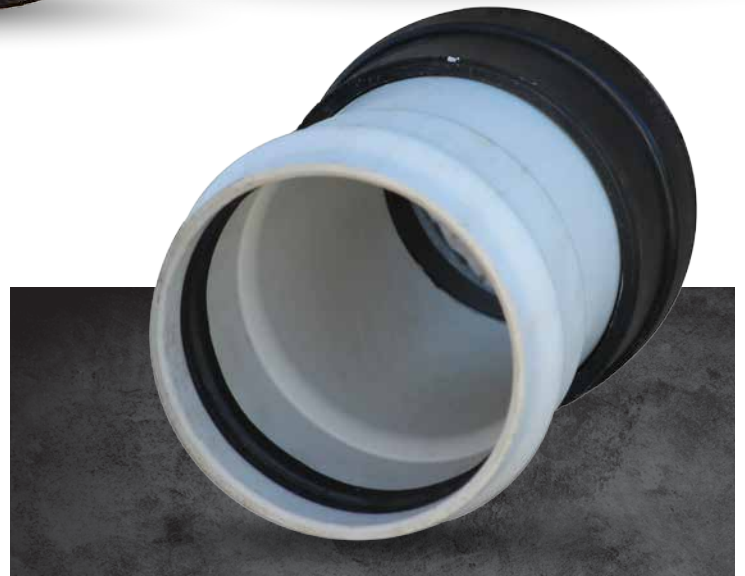


# Corebell Adapter Coupling

For connection of Concrete Pipe, Manhole, or Catch Basin to PVC Sewer Pipe



A flexible watertight connection using rubber gaskets with proven reliability throughout the industry, the Corebell Adapter offers a simple cost effective solution that is easy to install. The body of the Corebell is made from polyethylene which offers a small amount of flexibility therefore eliminating problems with shear stresses that can cause leaks.



*Example of Corebell Adapter Coupling uniting PVC pipe with concrete.*

# Corebell Adapter Coupling

The perfect solution when adapting concrete pipe, manhole (In sizes 18" and above) or catch basin to PVC sewer pipe

## Easy Installation

1. Core hole to specified size (see chart).
2. Insert spigot into cored hole and push.
3. Chamfer lateral connection pipe, grease the chamfered-end only and push in.

ITEM CODE	INCHES	MM	HOLE DIAMETER
Core 4	4"	100	5"
Core 5	5"	125	6.25"
Core 6	6"	150	7"
Core 8	8"	200	9"
Core 10	10"	250	11"



**Hole Saw and accessories available at Galaxy Plastics**



**1. Mount saw jig to manhole**



**2. Drill/Core manhole**



**3. Finished hole**



**4. Lubricate the gasket of the Corebell Adapter Coupling**



**5. Use a flat block of wood and hammer to knock and seat the Corebell Adapter Coupling into place**



**6. Installed Corebell Adapter Coupling ready for service**



## BRITISH COLUMBIA

**Galaxy Plastics Ltd.**  
 #9-30321 Fraser Highway  
 Abbotsford, BC V4X 1T3  
 877 808.1088 • FAX: 877 808.1288

## ONTARIO

**Galaxy Plastics Ltd.**  
 120 Walker Dr.  
 Brampton, ON L6T 4G9  
 888 431.0511 • FAX: 905 951.2215

*For more information on additional products and services offered by Galaxy Plastics please visit:*

**galaxyplastics.com**